

Large High School- Prevailing Wage

Quantity/Bid - Totals Only

Class	Mat. ID	Material Description	Amount	Units	Quantity	Lay-Rate		Labor		Material		Man Days	
						Waste	Units/Day	Per Unit	Ext. Cost	Per Unit	Ext. Cost		
0GC	CSSUPPLIE	Precast Stone Supplier	1	Ea	1	Each	0	\$0.00	\$0	\$126,450.00	\$126,450	0.0	
0GC	DUMPSTERS	Dumpster Masonry Disposal	30	Ea	30	Each	0	\$0.00	\$0	\$600.00	\$18,000	0.0	
0GC	ENGINEERI	Engineering Precast	1	Ea	1	Each	0	\$0.00	\$0	\$5,000.00	\$5,000	0.0	
0GC	LENTEN	Lenten Couplers	1	Ea	1	Each	0	\$0.00	\$0	\$50,000.00	\$50,000	0.0	
TAIR	CMU-AIR	Air Deduction For CMU	49	SF	49	SqFt	0	\$0.00	\$0	\$0.00	\$0	0.0	
TAIR	MOD-AIR	Air Deduction For Modula	82	SF	82	SqFt	0	\$0.00	\$0	\$0.00	\$0	0.0	
ANC	DW10V2CS	DW10,4" Vee,2 Climaseal	7,127	Ea	7,127	Each	400	\$1.49	\$10,632	\$1.00	\$7,127	17.8	
ANC	DW10V2CST	DW10,4" Vee,2 Tapcon	408	Ea	408	Each	400	\$1.49	\$609	\$1.50	\$613	1.0	
ANC	POS12.5V4	Pos-1-Tie & Anchor	16,734	Ea	16,734	Each	300	\$1.99	\$33,284	\$1.69	\$28,280	55.8	
ANC	REBARPO10	Rebar Positioner 10" CMU	201	Ea	201	Each	0	\$0.00	\$0	\$0.50	\$101	0.0	
ANC	REBARPO12	Rebar Positioner 12" CMU	3,208	Ea	3,208	Each	0	\$0.00	\$0	\$0.50	\$1,604	0.0	
ANC	REBARPO6	Rebar Positioner 6" CMU	482	Ea	482	Each	0	\$0.00	\$0	\$0.46	\$222	0.0	
ANC	REBARPO8	Rebar Positioner 8" CMU	9,371	Ea	9,371	Each	0	\$0.00	\$0	\$0.48	\$4,498	0.0	
ANC	STONEANCH	S.S. Stone Anchors	3,473	Ea	3,473	Each	0	\$0.00	\$0	\$4.00	\$13,892	0.0	
BRI	ECONO1P	Economy Brick 1 Pier	133	SF	622	Pieces	4.00%	250	\$5.91	\$3,535	\$1.70	\$1,057	2.0
BRI	UTIL	Utility Brick	27,049	SF	84,394	Pieces	4.00%	350	\$4.22	\$342,657	\$2.50	\$210,986	231.9
BRI	UTIL12512	Utility Shape 12/5-1-2	3	SF	10	Pieces	4.00%	250	\$5.91	\$59	\$270.00	\$2,808	0.0
BRI	UTIL1512	Utility Shape 1/5-1-2	27	SF	83	Pieces	4.00%	250	\$5.91	\$473	\$81.00	\$6,739	0.3
BRI	UTIL2	Utility Brick 2	214	SF	668	Pieces	4.00%	300	\$4.93	\$3,165	\$2.50	\$1,671	2.1
BRI	UTIL6512	Utility Shape 6/5-1-2	27	SF	83	Pieces	4.00%	225	\$6.57	\$525	\$81.00	\$6,739	0.4
BRI	UTILP	Utility Brick Pier	4,865	SF	15,180	Pieces	4.00%	225	\$6.57	\$95,875	\$2.50	\$37,950	64.9
BRI	UTILP152E	Utility Shape 2/5-2-1 Ext	7	SF	23	Pieces	4.00%	200	\$7.39	\$163	\$146.00	\$3,340	0.1
BRI	UTILP152I	Utility Shape 2/5-2-1 Int	11	SF	35	Pieces	4.00%	200	\$7.39	\$251	\$104.00	\$3,677	0.2
BRI	UTILP2	Utility Brick Pier 2	91	SF	283	Pieces	4.00%	225	\$6.57	\$1,787	\$2.50	\$707	1.2
BRI	UTILRAD	Utility Brick Radius	2,251	SF	7,023	Pieces	4.00%	225	\$6.57	\$44,357	\$2.50	\$17,558	30.0
BRI	UTILSIGN	Utility Brick Sign	153	SF	478	Pieces	4.00%	225	\$6.57	\$3,019	\$2.50	\$1,195	2.0
CMU	HW02P	2" NW CMU Pier	256	SF	294	Pieces	2.00%	100	\$15.96	\$4,596	\$1.13	\$332	2.9
CMU	HW04	4" NW CMU	8,424	SF	9,666	Pieces	2.00%	130	\$12.28	\$116,341	\$1.25	\$12,083	72.9
CMU	HW04BN	4" NW CMU BN	540	SF	619	Pieces	2.00%	130	\$12.28	\$7,452	\$1.55	\$960	4.7
CMU	HW04BNP	4" NW CMU BN Pier	3,233	SF	3,710	Pieces	2.00%	100	\$15.96	\$58,044	\$1.55	\$5,750	36.4
CMU	HW04DBN	4" NW CMU DBN	9	SF	10	Pieces	2.00%	130	\$12.28	\$123	\$1.65	\$17	0.1
CMU	HW04H	4" NW CMU Half	36	SF	82	Pieces	2.00%	130	\$12.28	\$982	\$0.94	\$77	0.6
CMU	HW04HBN	4" NW CMU Half BN	9	SF	20	Pieces	2.00%	130	\$12.28	\$246	\$1.24	\$25	0.2
CMU	HW04HDBN	4" NW CMU Half DBN	4	SF	10	Pieces	2.00%	130	\$12.28	\$123	\$1.34	\$14	0.1
CMU	HW04HH	4" NW CMU-Halfhigh	25	SF	57	Pieces	2.00%	130	\$12.28	\$691	\$1.25	\$72	0.4
CMU	HW04HHBN	4" NW CMU-Halfhigh BN	3	SF	6	Pieces	2.00%	130	\$12.28	\$74	\$1.55	\$9	0.0
CMU	HW04HHBNP	4" NW CMU-Halfhigh BN Pie	8	SF	17	Pieces	2.00%	100	\$15.96	\$271	\$1.55	\$27	0.2
CMU	HW04HHP	4" NW CMU-Halfhigh Pier	7	SF	15	Pieces	2.00%	100	\$15.96	\$239	\$1.25	\$19	0.2
CMU	HW04P	4" NW CMU Pier	894	SF	1,026	Pieces	2.00%	100	\$15.96	\$16,049	\$1.25	\$1,282	10.1
CMU	HW06	6" NW CMU	1,632	SF	1,872	Pieces	2.00%	130	\$12.28	\$22,537	\$1.69	\$3,165	14.1
CMU	HW06BN	6" NW CMU-BN	18	SF	20	Pieces	2.00%	130	\$12.28	\$246	\$1.99	\$41	0.2
CMU	HW06HH	6" NW CMU-Halfhigh	33	SF	76	Pieces	2.00%	130	\$12.28	\$918	\$1.69	\$129	0.6
CMU	HW06HHBN	6" NW CMU-Halfhigh BN	0	SF	1	Pieces	2.00%	130	\$12.28	\$12	\$1.99	\$2	0.0
CMU	HW06KO	6" NW CMU-K.O.	399	SF	458	Pieces	2.00%	130	\$12.28	\$5,507	\$1.99	\$911	3.5
CMU	HW08	8" NW CMU	37,148	SF	42,628	Pieces	2.00%	125	\$12.77	\$533,575	\$1.92	\$81,846	334.3
CMU	HW08BB	8" NW CMU-B.B.	610	SF	700	Pieces	2.00%	125	\$12.77	\$8,764	\$2.27	\$1,589	5.5
CMU	HW08BBE	8" NW CMU-B.B. Elevator	14	SF	16	Pieces	2.00%	100	\$15.96	\$247	\$2.27	\$36	0.2
CMU	HW08BN	8" NW CMU-BN	1,180	SF	1,355	Pieces	2.00%	125	\$12.77	\$16,955	\$2.22	\$3,007	10.6
CMU	HW08DBN	8" NW CMU-DBN	184	SF	211	Pieces	2.00%	125	\$12.77	\$2,643	\$2.27	\$479	1.7
CMU	HW08E	8" NW CMU Elevator	1,855	SF	2,129	Pieces	2.00%	100	\$15.96	\$33,309	\$1.92	\$4,087	20.9
CMU	HW08H	8" NW CMU Half	1,148	SF	2,635	Pieces	2.00%	125	\$12.77	\$32,978	\$1.34	\$3,530	20.7
CMU	HW08HBN	8" NW CMU Half BN	36	SF	84	Pieces	2.00%	125	\$12.77	\$1,047	\$1.64	\$137	0.7
CMU	HW08HDBN	8" NW CMU Half DBN	67	SF	154	Pieces	2.00%	125	\$12.77	\$1,928	\$1.69	\$260	1.2
CMU	HW08HE	8" NW CMU Half Elevator	18	SF	41	Pieces	2.00%	100	\$15.96	\$638	\$1.34	\$55	0.4
CMU	HW08HH	8" NW CMU-Halfhigh	730	SF	1,676	Pieces	2.00%	125	\$12.77	\$20,973	\$1.92	\$3,217	13.1
CMU	HW08KO	8" NW CMU-K.O.	9,392	SF	10,778	Pieces	2.00%	125	\$12.77	\$134,903	\$2.22	\$23,926	84.5
CMU	HW08KOE	8" NW CMU-K.O. Elevator	376	SF	432	Pieces	2.00%	100	\$15.96	\$6,753	\$2.22	\$958	4.2

Large High School- Prevailing Wage

Quantity/Bid - Totals Only

Class	Mat. ID	Material Description	Amount	Units	Quantity	Lay-Rate		----- Labor -----		----- Material -----		Man Days
						Waste	Units/Day	Per Unit	Ext. Cost	Per Unit	Ext. Cost	
	CMU HW08KOP	8" NW CMU-K.O. Pier	37	SF	43 Pieces	2.00%	100	\$15.96	\$670	\$2.22	\$95	0.4
	CMU HW08P	8" NW CMU Pier	91	SF	104 Pieces	2.00%	100	\$15.96	\$1,628	\$1.92	\$200	1.0
	CMU HW08SIGN	8" NW CMU Sign	37	SF	42 Pieces	2.00%	100	\$15.96	\$662	\$1.92	\$81	0.4
	CMU HW10	10" NW CMU	1,154	SF	1,324 Pieces	2.00%	120	\$13.30	\$17,266	\$2.83	\$3,748	10.8
	CMU HW10BB	10" NW CMU-B.B.	24	SF	28 Pieces	2.00%	120	\$13.30	\$362	\$3.23	\$90	0.2
	CMU HW10BN	10" NW CMU BN	68	SF	78 Pieces	2.00%	120	\$13.30	\$1,011	\$3.18	\$247	0.6
	CMU HW10H	10" NW CMU Half	6	SF	14 Pieces	2.00%	120	\$13.30	\$186	\$2.12	\$30	0.1
	CMU HW10HBN	10" NW CMU Half BN	30	SF	69 Pieces	2.00%	120	\$13.30	\$904	\$2.42	\$168	0.6
	CMU HW10HH	10" NW CMU-Halfhigh	31	SF	71 Pieces	2.00%	120	\$13.30	\$924	\$2.83	\$201	0.6
	CMU HW10KO	10" NW CMU-K.O.	326	SF	375 Pieces	2.00%	120	\$13.30	\$4,884	\$3.18	\$1,191	3.1
	CMU HW12	12" NW CMU	18,877	SF	21,661 Pieces	2.00%	120	\$13.30	\$282,429	\$2.88	\$62,384	177.0
	CMU HW12BB	12" NW CMU-B.B.	52	SF	60 Pieces	2.00%	120	\$13.30	\$778	\$3.28	\$196	0.5
	CMU HW12BN	12" NW CMU BN	57	SF	65 Pieces	2.00%	120	\$13.30	\$851	\$3.18	\$208	0.5
	CMU HW12H	12" NW CMU Half	292	SF	669 Pieces	2.00%	120	\$13.30	\$8,724	\$2.16	\$1,445	5.5
	CMU HW12HBN	12" NW CMU Half BN	24	SF	55 Pieces	2.00%	120	\$13.30	\$718	\$2.46	\$135	0.5
	CMU HW12HH	12" NW CMU-Halfhigh	101	SF	231 Pieces	2.00%	120	\$13.30	\$3,016	\$2.88	\$666	1.9
	CMU HW12KO	12" NW CMU-K.O.	4,499	SF	5,162 Pieces	2.00%	120	\$13.30	\$67,309	\$3.18	\$16,416	42.2
	CMU HW12SIGN	12" NW CMU Sign	88	SF	101 Pieces	2.00%	100	\$15.96	\$1,576	\$2.88	\$290	1.0
	COM4COMPRES	4" CMU Top Of Wall Filler	98	LF	98 LinFt		400	\$3.99	\$392	\$1.50	\$147	0.2
	COM6COMPRES	6" CMU Top Of Wall Filler	92	LF	92 LinFt		400	\$3.99	\$366	\$1.50	\$138	0.2
	COM8COMPRES	8" CMU Top Of Wall Filler	1,404	LF	1,404 LinFt		400	\$3.99	\$5,600	\$1.50	\$2,105	3.5
	CON RUBCJ+	Rubber Control Joint "+"	1,513	LF	1,513 LinFt		0	\$0.00	\$0	\$1.30	\$1,966	0.0
	DRI SDR1/2X3	Stainless Drip Edge	2,655	LF	2,655 LinFt		0	\$0.00	\$0	\$2.35	\$6,240	0.0
	DRI TERMBAR	Termination Bar	2,655	LF	2,655 LinFt		0	\$0.00	\$0	\$1.95	\$5,178	0.0
	FLA SS24"	S. S. Flashing 16 oz/24"	113	LF	113 LinFt		150	\$3.98	\$448	\$16.00	\$1,803	0.8
	FLA YOMF5OZ24	York Multiflash 24" Wide	2,655	LF	2,655 LinFt		300	\$1.99	\$5,282	\$5.67	\$15,047	8.9
	GRC 2500PSICY	2500 PSI Grout in Cu.Yrds	517	CY	517 CbcYds		10	\$159.88	\$82,598	\$163.58	\$84,509	51.7
	INR THERMAX1"	Thermax Insulation 1"	2,292	SF	2,292 SqFt		1,200	\$0.50	\$1,140	\$0.98	\$2,247	1.9
	INR THERMAX3"	Thermax Insulation 3"	26,978	SF	26,978 SqFt		1,200	\$0.50	\$13,415	\$2.90	\$78,237	22.5
	MN MN1	Mortar Trap 1"	156	LF	156 LinFt		0	\$0.00	\$0	\$1.25	\$195	0.0
	MN MN2	Mortar Trap 2"x10"	2,499	LF	2,499 LinFt		0	\$0.00	\$0	\$1.65	\$4,124	0.0
	MOR [B] Mortar For CMU	CMU	9,388	CF	9,388 CbcFt		0	\$0.00	\$0	\$7.40	\$69,445	0.0
	MOR [G] Mortar For Ground Face CMU	Ground Face CMU	280	CF	280 CbcFt		0	\$0.00	\$0	\$11.53	\$3,227	0.0
	MOR [H] Mortar For Brick	Brick	3,865	CF	3,865 CbcFt		0	\$0.00	\$0	\$9.81	\$37,899	0.0
	PRL CONCCA283	Precast Cap 28"x36"x8"	12	LF	4 Pieces		6	\$246.32	\$985	\$0.00	\$0	0.7
	PRL CONCCA325	Precast Cap 32"x32"x5"	5	LF	2 Pieces		6	\$246.32	\$493	\$0.00	\$0	0.3
	PRL CONCCA383	Precast Cap 38"x36"x8"	13	LF	4 Pieces		6	\$246.32	\$983	\$0.00	\$0	0.7
	PRL CONCCAP28	Precast Cap 28"x40"x8"	7	LF	2 Pieces		6	\$246.32	\$493	\$0.00	\$0	0.3
	PRL CONCCAP40	Precast Cap 40"x40"x12"	9	LF	3 Pieces		6	\$246.32	\$739	\$0.00	\$0	0.5
	PRL CONCCAP48	Precast Cap 48"x48"x12"	7	LF	2 Pieces		6	\$246.32	\$493	\$0.00	\$0	0.3
	PRL PC3PAN520	Precast Panel PC3 5"x20"	38	LF	38 LinFt		20	\$73.90	\$2,812	\$0.00	\$0	1.9
	PRL PC3PAN532	Precast Panel PC3 5"x32"	163	LF	163 LinFt		20	\$73.90	\$12,078	\$0.00	\$0	8.2
	PRL PC3PAN562	Precast Panel PC3 5"x62"	15	LF	15 LinFt		15	\$98.53	\$1,501	\$0.00	\$0	1.0
	PRL PC7PAN732	Precast Panel PC7 7"x32"	37	LF	37 LinFt		20	\$73.90	\$2,743	\$0.00	\$0	1.9
	PRL PC7PAN736	Precast Panel PC7 7"x36"	9	LF	9 LinFt		15	\$98.53	\$920	\$0.00	\$0	0.6
	PRL PC7PAN740	Precast Panel PC7 7"x40"	202	LF	202 LinFt		15	\$98.53	\$19,874	\$0.00	\$0	13.4
	PRL PC7PAN744	Precast Panel PC7 7"x44"	17	LF	17 LinFt		15	\$98.53	\$1,716	\$0.00	\$0	1.2
	PRL PCBAND38	Precast Band 3"x8"	13	LF	13 LinFt		35	\$42.23	\$548	\$0.00	\$0	0.4
	PRL PCBAND51C	Precast Band 5"x12" Chamf	562	LF	562 LinFt		30	\$49.26	\$27,686	\$0.00	\$0	18.7
	PRL PCBAND54C	Precast Band 5"x4" Chamfe	40	LF	40 LinFt		35	\$42.23	\$1,710	\$0.00	\$0	1.2
	PRL PCBAND58C	Precast Band 5"x8" Chamfe	1,266	LF	1,266 LinFt		35	\$42.23	\$53,471	\$0.00	\$0	36.2
	PRL PCBAS2212	Precast Base 22"x12" Colu	8	LF	8 LinFt		17	\$86.94	\$667	\$0.00	\$0	0.5
	PRL PCBASE48	Precast Base 4"x8"	185	LF	185 LinFt		35	\$42.23	\$7,820	\$0.00	\$0	5.3
	PRL PCCAP218	Precast Cap 21"x8"	24	LF	24 LinFt		20	\$73.90	\$1,773	\$0.00	\$0	1.2
	PRL PCCAP288S	Precast Cap 28"x8" Sign	9	LF	3 Pieces		8	\$184.74	\$554	\$0.00	\$0	0.4
	PRL PCLINT58	Precast Lintel 5"x8"	325	LF	325 LinFt		35	\$42.23	\$13,735	\$0.00	\$0	9.3
	PRL PCPANE520	Precast Panel 5"x20"	11	LF	11 LinFt		20	\$79.80	\$904	\$0.00	\$0	0.6

Large High School- Prevailing Wage

Quantity/Bid - Totals Only

Class	Mat. ID	Material Description	Amount	Units	Quantity	Waste	Lay-Rate		----- Labor -----		----- Material -----		Man Days
							Units/Day	Per Unit	Ext. Cost	Per Unit	Ext. Cost		
	PRL	PCPANE556	36	LF	36	LinFt	15	\$106.39	\$3,830	\$0.00	\$0	2.4	
	PRL	PCSILL368	49	LF	49	LinFt	15	\$98.53	\$4,806	\$0.00	\$0	3.3	
	PRL	PCSILL58	427	LF	427	LinFt	35	\$42.23	\$18,030	\$0.00	\$0	12.2	
	PRL	PCSOFF368	22	LF	22	LinFt	15	\$98.53	\$2,150	\$0.00	\$0	1.5	
	REB	#4	10,406	LF	10,406	LinFt	0	\$0.00	\$0	\$0.50	\$5,203	0.0	
	REB	#4BB REBA	5,470	LF	5,470	LinFt	0	\$0.00	\$0	\$0.50	\$2,735	0.0	
	REB	#5BB REBA	30,976	LF	30,976	LinFt	0	\$0.00	\$0	\$0.80	\$24,781	0.0	
	REB	#6	1,206	LF	1,206	LinFt	0	\$0.00	\$0	\$1.10	\$1,326	0.0	
	REB	#7	24,559	LF	24,559	LinFt	0	\$0.00	\$0	\$1.50	\$36,839	0.0	
	REB	#8	16,119	LF	16,119	LinFt	0	\$0.00	\$0	\$1.90	\$30,625	0.0	
	REV	INFILLED	4	Ea	4	Each	2	\$1,066.48	\$4,266	\$250.00	\$1,000	2.7	
	SCA	SCAFFOLDE	49,116	SF	49,116	SqFt	0	\$0.00	\$0	\$0.00	\$0	0.0	
	SCA	SCAFFOLDI	106,708	SF	106,708	SqFt	0	\$0.00	\$0	\$0.00	\$0	0.0	
	SPL	SF082	411	SF	472	Pieces	2.00%	120	\$13.30	\$6,149	\$6.85	\$3,231	3.9
	SPL	SF082CSS	168	SF	193	Pieces	2.00%	120	\$13.30	\$2,520	\$7.10	\$1,372	1.6
	SPL	SF083	864	SF	991	Pieces	2.00%	120	\$13.30	\$12,924	\$5.34	\$5,293	8.1
	SPL	SF08BB2	4	SF	5	Pieces	2.00%	120	\$13.30	\$66	\$9.60	\$49	0.0
	SPL	SF08BB3	24	SF	27	Pieces	2.00%	120	\$13.30	\$356	\$7.34	\$200	0.2
	SPL	SF08COR2	23	SF	27	Pieces	2.00%	120	\$13.30	\$346	\$8.60	\$228	0.2
	SPL	SF08COR2C	7	SF	8	Pieces	2.00%	120	\$13.30	\$106	\$8.85	\$72	0.1
	SPL	SF08COR3	46	SF	53	Pieces	2.00%	120	\$13.30	\$692	\$6.34	\$336	0.4
	SPL	SF08H2	7	SF	16	Pieces	2.00%	120	\$13.30	\$213	\$6.89	\$112	0.1
	SPL	SF08H2C	1	SF	2	Piece	2.00%	120	\$13.30	\$27	\$6.89	\$14	0.0
	SPL	SF08H3	20	SF	45	Pieces	2.00%	120	\$13.30	\$585	\$4.01	\$180	0.4
	SPL	SF08HH2	121	SF	279	Pieces	2.00%	120	\$13.30	\$3,634	\$5.14	\$1,433	2.3
	SPL	SF08HHC2	5	SF	12	Pieces	2.00%	120	\$13.30	\$160	\$6.89	\$84	0.1
	SPL	SF08KO2	220	SF	252	Pieces	2.00%	120	\$13.30	\$3,287	\$8.60	\$2,168	2.1
	SPL	SF08KO2CS	32	SF	36	Pieces	2.00%	120	\$13.30	\$472	\$8.85	\$320	0.3
	SPL	SF08KO3	160	SF	184	Pieces	2.00%	120	\$13.30	\$2,401	\$6.34	\$1,167	1.5
	SPS	GF0812S	465	SF	534	Pieces	2.00%	120	\$13.30	\$6,957	\$8.60	\$4,589	4.4
	SPS	GF081BN2	21	SF	24	Pieces	2.00%	120	\$13.30	\$319	\$12.35	\$302	0.2
	SPS	GF082DBN1	35	SF	40	Pieces	2.00%	120	\$13.30	\$519	\$16.10	\$640	0.3
	SPS	GF08HDB21	9	SF	20	Pieces	2.00%	120	\$13.30	\$266	\$14.31	\$292	0.2
	SPS	GF08KO21	97	SF	111	Pieces	2.00%	120	\$13.30	\$1,444	\$10.35	\$1,147	0.9
	WEE	WEEPVENT	1,346	Ea	1,346	Each	0	\$0.00	\$0	\$0.60	\$808	0.0	
	WIR	HDL9GA04"	10,823	LF	10,823	LinFt	0	\$0.00	\$0	\$0.30	\$3,247	0.0	
	WIR	HDL9GA06"	1,691	LF	1,691	LinFt	0	\$0.00	\$0	\$0.32	\$541	0.0	
	WIR	HDL9GA08"	44,227	LF	44,227	LinFt	0	\$0.00	\$0	\$0.35	\$15,479	0.0	
	WIR	HDL9GA10"	1,127	LF	1,127	LinFt	0	\$0.00	\$0	\$0.37	\$417	0.0	
	WIR	HDL9GA12"	18,953	LF	18,953	LinFt	0	\$0.00	\$0	\$0.40	\$7,581	0.0	
Totals:									\$2,303,917		\$1,252,366	1,545.3	

Large High School- Prevailing Wage

Quantity/Bid - Totals Only

Crew Section

Ratio of Production Masons to

ID	Description	Production Masons	Prod-Mason Days	Crew Days	Cost Per Day Whole Crew	Cost Per Day Per Prod-Mason	Extended Labor Cost	Ratio of Production Masons to			
								Super	Layout	Saw	Tender/ Other
1	Brick Crew- 1-NWBF,13-B,10L,1-O And Lull	13.00	456.5	35.114	\$19,212.79	\$1,477.91	\$674,645.40	13.00			1.18
2	Block Crew- 1-NWBF,10-B,9-L,1-O And Lull	10.00	925.9	92.586	\$15,959.23	\$1,595.92	\$1,477,597.01	10.00			1.00
4	Grout Crew- 1/8-BF,1-B,1-L	1.00	51.6	51.614	\$1,599.73	\$1,599.73	\$82,568.75	8.00			1.00
5	Ties, Insulation, Flashing- 1-Laborer	1.00	108.7	108.662	\$596.71	\$596.71	\$64,840.04				
7	Restoration Crew- 1/8-BF,1-B,1-L	1.00	2.7	2.667	\$1,599.73	\$1,599.73	\$4,265.94	8.00			1.00
Lay Crew Totals			1,545.3	290.643			\$2,303,917.14				
3	Washdown Crew- 1-Laborer	1.00	67.8	67.815	\$596.71	\$596.71	\$40,466.43				
All Crew Totals			1,613.1	358.458			\$2,344,383.56				

Totals by Labor ID

ID	Estimated					
	Hours	Base	Fringe	Burden	Total	Cost / Hour
Brick Non Forem	1,075.88	\$80,338.25	\$18,739.71	\$27,226.63	\$126,304.59	\$117.40
Brick Non-Union	11,493.00	\$800,740.39	\$200,185.10	\$271,370.92	\$1,272,296.40	\$110.70
Forklif Non-Uni	1,021.60	\$63,772.41	\$15,943.10	\$21,612.47	\$101,327.98	\$99.19
Laborer Non-Uni	11,321.39	\$531,471.20	\$132,867.80	\$180,115.59	\$844,454.60	\$74.59
	24,911.87	\$1,476,322.25	\$367,735.71	\$500,325.61	\$2,344,383.56	\$94.11

Totals by Equipment ID

ID	Description	Cost	Days	Cost / Day
Grout Pump	Grout Pump	\$10,322.86	51.614	\$200.00
Lull 1044	Lull 1044	\$24,422.17	162.814	\$150.00
Equipment Totals		\$34,745.04	214.429	

Large High School- Prevailing Wage

Quantity/Bid - Totals Only

		Costs & Taxes	Overhead	Profit	OH + Profit	Totals	% of Bid
Material Costs		\$1,252,366.25					
Misc. Taxable Costs		\$0.00					
Taxable Sub-Total		\$1,252,366.25					
	Tax 0.000%	\$0.00	5.00%	10.00%			
Material + Misc. Taxable Costs + Tax		\$1,252,366.25	\$62,618.31	\$131,498.46	\$194,116.77	\$1,446,483.02	32.4%
Base	62.973%	\$1,476,322.25					
Fringe	15.686%	\$367,735.71					
Burden	21.341%	\$500,325.61	5.00%	10.00%			
Crew Labor Cost		\$2,344,383.56	\$117,219.18	\$246,160.27	\$363,379.45	\$2,707,763.02	60.7%
Subbed Out			5.00%	10.00%			
Cleaning Cost		\$0.00	\$0.00	\$0.00	\$0.00	\$0.00	
Equipment		\$34,745.04	\$1,737.25	\$3,648.23	\$5,385.48	\$40,130.52	0.9%
Mobilization		\$0.00					
Mockup Panel		\$4,000.00					
Misc. Accessori		\$25,000.00					
Move Lull		\$1,200.00					
Precast		\$0.00					
Scaffold/Hoisti		\$200,000.00	5.00%	10.00%			
Misc. Sub-Total		\$230,200.00	\$11,510.00	\$24,171.00	\$35,681.00	\$265,881.00	6.0%
		Percent of Cost	5.00%	10.50%	15.50%	Bid Price	
Grand Totals		\$3,861,694.85	\$193,084.74	\$405,477.96	\$598,562.70	\$4,460,257.56	
		Average Cost Per Square Foot		Without Misc. or OH&P	With Misc. and OH&P	Total Square Feet	
				\$26.34	\$32.35	137,864.55	

Large High School- Prevailing Wage

Report Run
1/22/2021 4:04 PM

Labor in Project

Page 1

Description	Rate	Amount	OverTime
Brick Non Forem			Bricklayer Foreman Prevailing Wage
Wages			
Base		\$69.67	<input checked="" type="checkbox"/>
Foreman Pay		\$5.00	<input type="checkbox"/>
Fringe		\$17.42	<input checked="" type="checkbox"/>
Burden			
Social Security	7.65%	\$5.71	<input checked="" type="checkbox"/>
Workmen's Compensation	16.00%	\$11.95	<input type="checkbox"/>
Federal Unemployment Ins.	0.80%	\$0.60	<input checked="" type="checkbox"/>
State Unemployment Ins.	7.75%	\$5.79	<input checked="" type="checkbox"/>
Liability Insurance	1.65%	\$1.23	<input checked="" type="checkbox"/>
Health Insurance	0.04%	\$0.03	<input type="checkbox"/>
Brick Non-Union			Bricklayer Prevailing Wage
Wages			
Base		\$69.67	<input checked="" type="checkbox"/>
Fringe		\$17.42	<input checked="" type="checkbox"/>
Burden			
Social Security	7.65%	\$5.33	<input checked="" type="checkbox"/>
Workmen's Compensation	16.00%	\$11.15	<input type="checkbox"/>
Federal Unemployment Ins.	0.80%	\$0.56	<input checked="" type="checkbox"/>
State Unemployment Ins.	7.75%	\$5.40	<input checked="" type="checkbox"/>
Liability Insurance	1.65%	\$1.15	<input checked="" type="checkbox"/>
Health Insurance	0.04%	\$0.03	<input type="checkbox"/>
Forklif Non-Uni			Forklift Driver Prevailing Wage
Wages			
Base		\$62.42	<input checked="" type="checkbox"/>
Fringe		\$15.61	<input type="checkbox"/>
Burden			
Social Security	7.65%	\$4.78	<input checked="" type="checkbox"/>
Workmen's Compensation	16.00%	\$9.99	<input type="checkbox"/>
Federal Unemployment Ins.	0.80%	\$0.50	<input checked="" type="checkbox"/>
State Unemployment Ins.	7.75%	\$4.84	<input checked="" type="checkbox"/>
Liability Insurance	1.65%	\$1.03	<input checked="" type="checkbox"/>
Health Insurance	0.04%	\$0.02	<input type="checkbox"/>
Laborer Non-Uni			Laborer Prevailing Wage
Wages			
Base		\$46.94	<input checked="" type="checkbox"/>
Fringe		\$11.74	<input type="checkbox"/>
Burden			
Social Security	7.65%	\$3.59	<input checked="" type="checkbox"/>
Workmen's Compensation	16.00%	\$7.51	<input type="checkbox"/>
Federal Unemployment Ins.	0.80%	\$0.38	<input checked="" type="checkbox"/>
State Unemployment Ins.	7.75%	\$3.64	<input checked="" type="checkbox"/>
Liability Insurance	1.65%	\$0.77	<input checked="" type="checkbox"/>
Health Insurance	0.04%	\$0.02	<input type="checkbox"/>

Large High School- Prevailing Wage

Report Run
1/22/2021

4:04 PM

Crews in Project

Page 1

Crew 1 Brick Crew- 1-NWBF,13-B,10L,1-O And Lull

ID	Description	Category	Qty	- Hours per Day -			Cost per Day
				Reg	x1.5	x2	
Brick Non Forem	Bricklayer Foreman Prevailing Wage	Supervisor	1.00	8.00			\$939.17
Brick Non-Union	Bricklayer Prevailing Wage	Production	13.00	8.00			\$11,512.99
Forklif Non-Uni	Forklift Driver Prevailing Wage	Tender/Other	1.00	8.00			\$793.48
Laborer Non-Uni	Laborer Prevailing Wage	Tender/Other	10.00	8.00			\$5,967.15
Lull 1044	Lull 1044	Equipment	2.00				\$300.00

	Base	Fringe	Burden	Equipment	Total
Cost per Crew Day	\$12,098.18	\$3,014.54	\$4,100.07	\$300.00	\$19,512.79
Cost per Prod.Man Day	\$930.63	\$231.89	\$315.39	\$23.08	\$1,500.98

Man Hours per Crew Day	Supervisor	Layout	Sawman	Production	Tender / Other
	8.00			104.00	88.00

Production Masons 13.00 Checked if, the number of Production Masons was Overridden

Crew 2 Block Crew- 1-NWBF,10-B,9-L,1-O And Lull

ID	Description	Category	Qty	- Hours per Day -			Cost per Day
				Reg	x1.5	x2	
Brick Non Forem	Bricklayer Foreman Prevailing Wage	Supervisor	1.00	8.00			\$939.17
Brick Non-Union	Bricklayer Prevailing Wage	Production	10.00	8.00			\$8,856.15
Forklif Non-Uni	Forklift Driver Prevailing Wage	Tender/Other	1.00	8.00			\$793.48
Laborer Non-Uni	Laborer Prevailing Wage	Tender/Other	9.00	8.00			\$5,370.43
Lull 1044	Lull 1044	Equipment	1.00				\$150.00

	Base	Fringe	Burden	Equipment	Total
Cost per Crew Day	\$10,050.50	\$2,502.62	\$3,406.11	\$150.00	\$16,109.23
Cost per Prod.Man Day	\$1,005.05	\$250.26	\$340.61	\$15.00	\$1,610.92

Man Hours per Crew Day	Supervisor	Layout	Sawman	Production	Tender / Other
	8.00			80.00	80.00

Production Masons 10.00 Checked if, the number of Production Masons was Overridden

Crew 3 Washdown Crew- 1-Laborer

ID	Description	Category	Qty	- Hours per Day -			Cost per Day
				Reg	x1.5	x2	
Laborer Non-Uni	Laborer Prevailing Wage	Production	1.00	8.00			\$596.71

	Base	Fringe	Burden	Equipment	Total
Cost per Crew Day	\$375.55	\$93.89	\$127.27		\$596.71
Cost per Prod.Man Day	\$375.55	\$93.89	\$127.27		\$596.71

Man Hours per Crew Day	Supervisor	Layout	Sawman	Production	Tender / Other
				8.00	

Production Masons 1.00 Checked if, the number of Production Masons was Overridden

Large High School- Prevailing Wage

Report Run
1/22/2021

4:04 PM

Crews in Project

Page 2

Crew 4 Grout Crew- 1/8-BF,1-B,1-L

ID	Description	Category	Qty	- Hours per Day -			Cost per Day
				Reg	x1.5	x2	
Brick Non Forem	Bricklayer Foreman Prevailing Wage	Supervisor	1.00	1.00			\$117.40
Brick Non-Union	Bricklayer Prevailing Wage	Production	1.00	8.00			\$885.61
Laborer Non-Uni	Laborer Prevailing Wage	Tender/Other	1.00	8.00			\$596.71
Grout Pump	Grout Pump	Equipment	1.00				\$200.00

	Base	Fringe	Burden	Equipment	Total
Cost per Crew Day	\$1,007.60	\$250.65	\$341.48	\$200.00	\$1,799.73
Cost per Prod.Man Day	\$1,007.60	\$250.65	\$341.48	\$200.00	\$1,799.73

Man Hours per Crew Day	Supervisor	Layout	Sawman	Production	Tender / Other
	1.00			8.00	8.00

Production Masons 1.00 Checked if, the number of Production Masons was Overriden

Crew 5 Ties, Insulation, Flashing- 1-Laborer

ID	Description	Category	Qty	- Hours per Day -			Cost per Day
				Reg	x1.5	x2	
Laborer Non-Uni	Laborer Prevailing Wage	Production	1.00	8.00			\$596.71

	Base	Fringe	Burden	Equipment	Total
Cost per Crew Day	\$375.55	\$93.89	\$127.27		\$596.71
Cost per Prod.Man Day	\$375.55	\$93.89	\$127.27		\$596.71

Man Hours per Crew Day	Supervisor	Layout	Sawman	Production	Tender / Other
				8.00	

Production Masons 1.00 Checked if, the number of Production Masons was Overriden

Crew 6 Precast Crew-1/8-BF,2-B,1-L,1-O And Lull

ID	Description	Category	Qty	- Hours per Day -			Cost per Day
				Reg	x1.5	x2	
Brick Non Forem	Bricklayer Foreman Prevailing Wage	Supervisor	1.00	1.00			\$117.40
Brick Non-Union	Bricklayer Prevailing Wage	Production	2.00	8.00			\$1,771.23
Forklif Non-Uni	Forklift Driver Prevailing Wage	Tender/Other	1.00	8.00			\$793.48
Laborer Non-Uni	Laborer Prevailing Wage	Tender/Other	1.00	8.00			\$596.71
Lull 1044	Lull 1044	Equipment	1.00				\$150.00

	Base	Fringe	Burden	Equipment	Total
Cost per Crew Day	\$2,064.37	\$514.84	\$699.61	\$150.00	\$3,428.82
Cost per Prod.Man Day	\$1,032.18	\$257.42	\$349.81	\$75.00	\$1,714.41

Man Hours per Crew Day	Supervisor	Layout	Sawman	Production	Tender / Other
	1.00			16.00	16.00

Production Masons 2.00 Checked if, the number of Production Masons was Overriden

Large High School- Prevailing Wage

Report Run
1/22/2021

4:04 PM

Crews in Project

Page 3

Crew 7 Restoration Crew- 1/8-BF,1-B,1-L

ID	Description	Category	Qty	- Hours per Day -			Cost per Day
				Reg	x1.5	x2	
Brick Non Forem	Bricklayer Foreman Prevailing Wage	Supervisor	1.00	1.00			\$117.40
Brick Non-Union	Bricklayer Prevailing Wage	Production	1.00	8.00			\$885.61
Laborer Non-Uni	Laborer Prevailing Wage	Tender/Other	1.00	8.00			\$596.71

	Base	Fringe	Burden	Equipment	Total
Cost per Crew Day	\$1,007.60	\$250.65	\$341.48		\$1,599.73
Cost per Prod.Man Day	\$1,007.60	\$250.65	\$341.48		\$1,599.73

Man Hours per Crew Day	Supervisor	Layout	Sawman	Production	Tender / Other
	1.00			8.00	8.00

Production Masons 1.00 Checked if, the number of Production Masons was Overridden

Crew 8 Scaffolding Crew- 2-L,1-O & 1 Lull

ID	Description	Category	Qty	- Hours per Day -			Cost per Day
				Reg	x1.5	x2	
Laborer Non-Uni	Laborer Prevailing Wage	Production	2.00	8.00			\$1,193.43
Forklif Non-Uni	Forklift Driver Prevailing Wage	Tender/Other	1.00	8.00			\$793.48
Lull 1044	Lull 1044	Equipment	1.00				\$150.00

	Base	Fringe	Burden	Equipment	Total
Cost per Crew Day	\$1,250.50	\$312.62	\$423.79	\$150.00	\$2,136.91
Cost per Prod.Man Day	\$625.25	\$156.31	\$211.90	\$75.00	\$1,068.46

Man Hours per Crew Day	Supervisor	Layout	Sawman	Production	Tender / Other
				16.00	8.00

Production Masons 2.00 Checked if, the number of Production Masons was Overridden

Crew 9 Demolition Crew- 2-L

ID	Description	Category	Qty	- Hours per Day -			Cost per Day
				Reg	x1.5	x2	
Laborer Non-Uni	Laborer Prevailing Wage	Production	2.00	8.00			\$1,193.43

	Base	Fringe	Burden	Equipment	Total
Cost per Crew Day	\$751.10	\$187.78	\$254.55		\$1,193.43
Cost per Prod.Man Day	\$375.55	\$93.89	\$127.27		\$596.71

Man Hours per Crew Day	Supervisor	Layout	Sawman	Production	Tender / Other
				16.00	

Production Masons 2.00 Checked if, the number of Production Masons was Overridden

Large High School- Prevailing Wage

Report Run
1/22/2021 4:04 PM

Crews in Project

Page 4

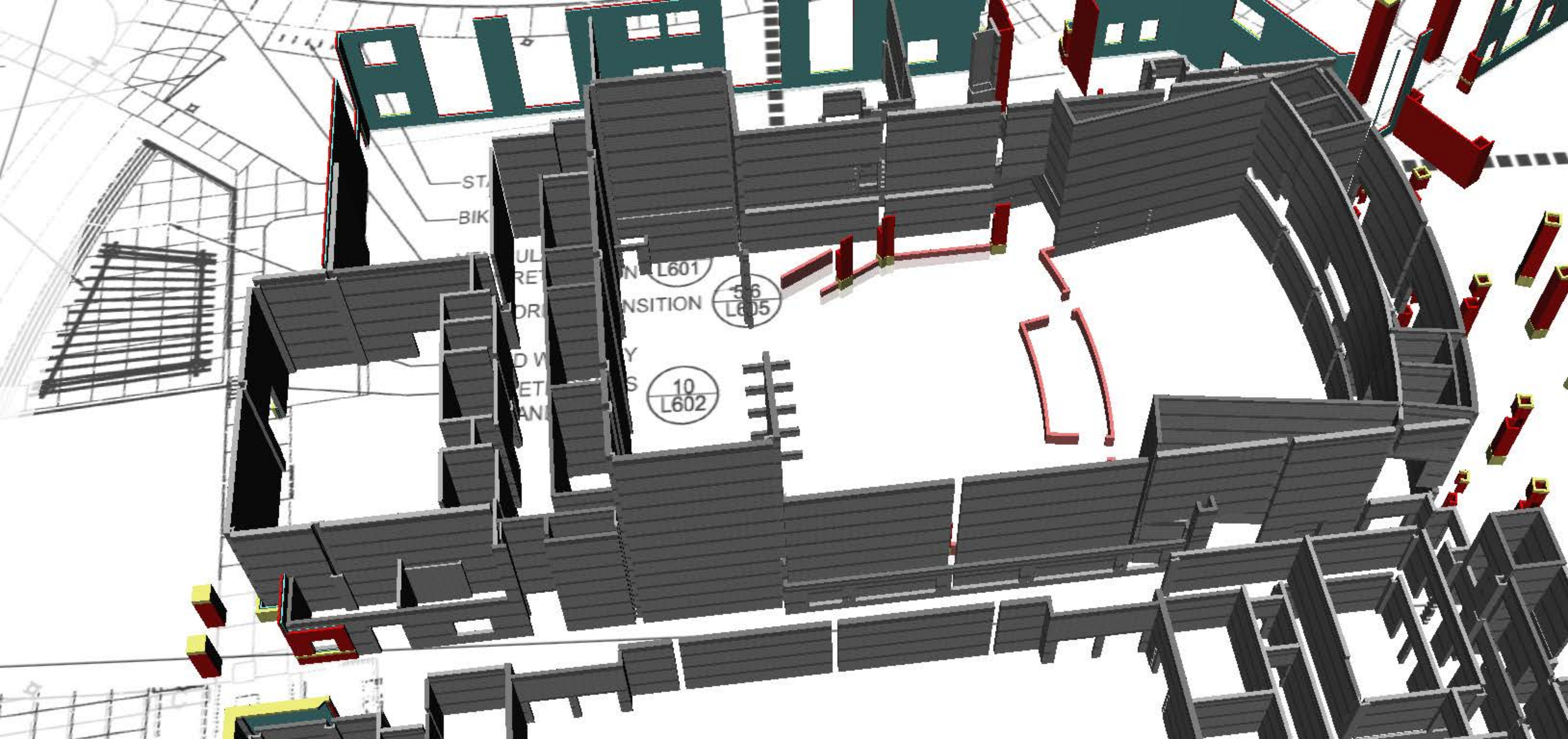
Crew A Mobilization Crew- 2-L

ID	Description	Category	Qty	- Hours per Day -			Cost per Day
				Reg	x1.5	x2	
Laborer Non-Uni	Laborer Prevailing Wage	Production	2.00	8.00			\$1,193.43

	Base	Fringe	Burden	Equipment	Total
Cost per Crew Day	\$751.10	\$187.78	\$254.55		\$1,193.43
Cost per Prod.Man Day	\$375.55	\$93.89	\$127.27		\$596.71

Man Hours per Crew Day	Supervisor	Layout	Sawman	Production	Tender / Other
				16.00	

Production Masons 2.00 Checked if, the number of Production Masons was Overridden



ST

BIK

UL

RE

OR

D W

ET

AN

L601

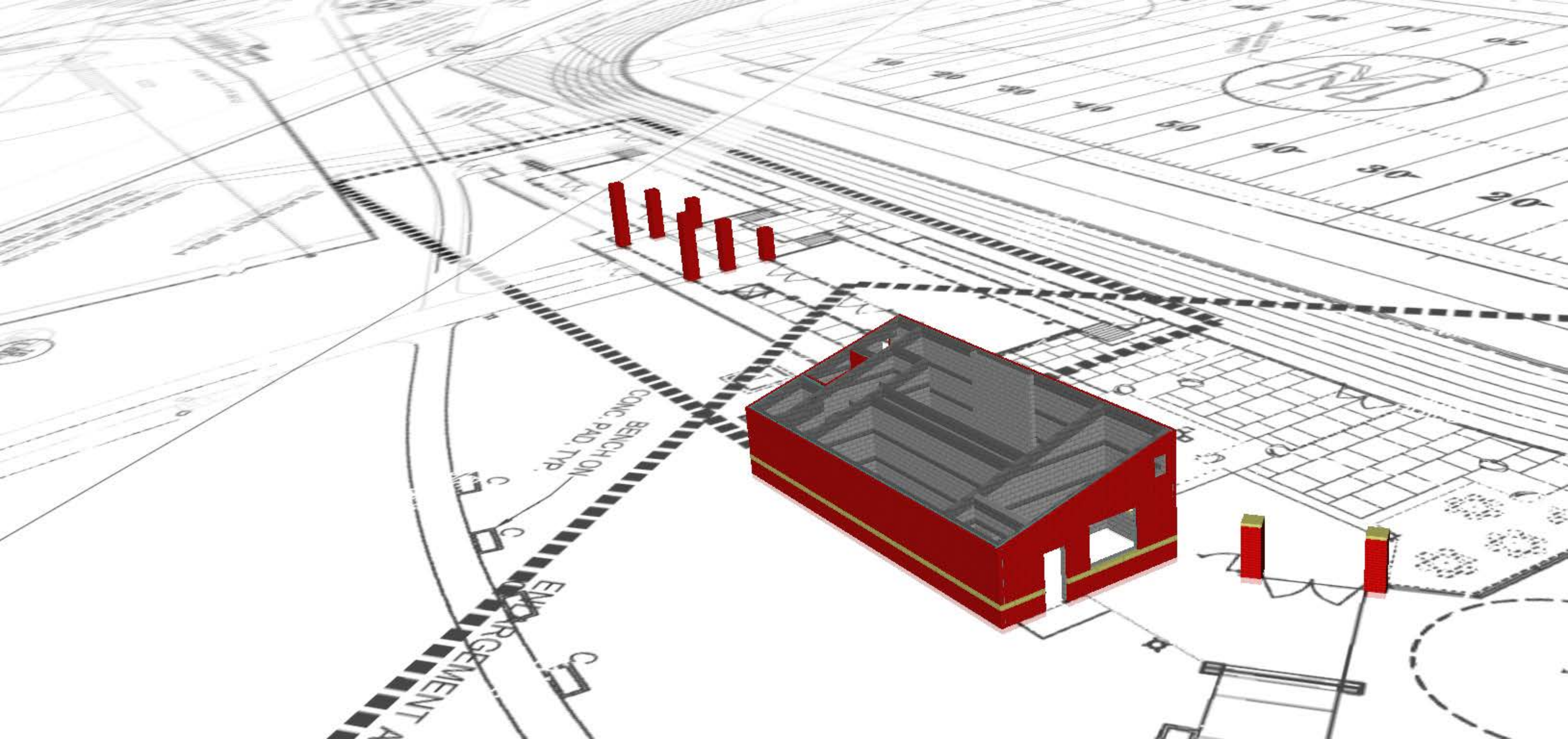
NSITION

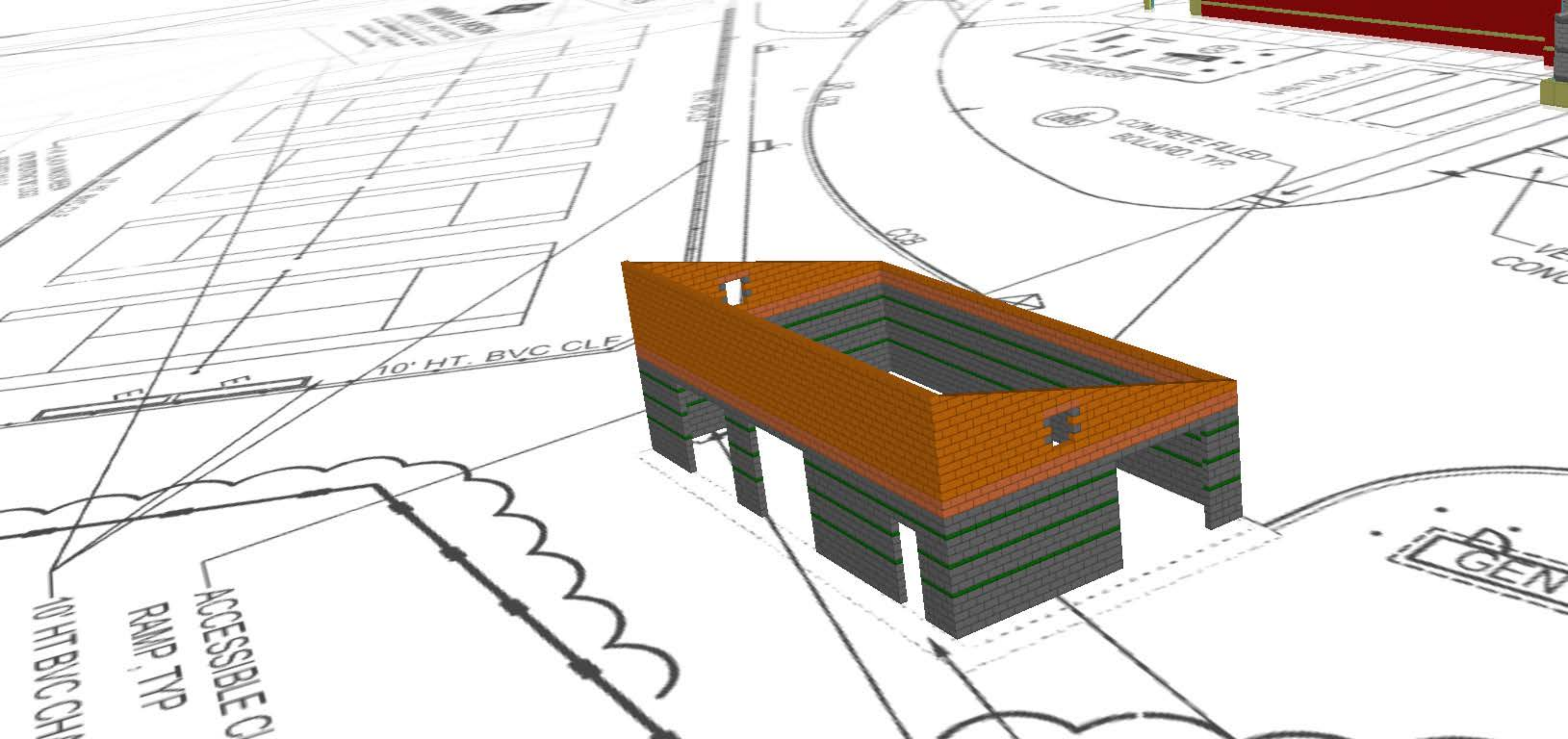
56

L605

10

L602





10' HT. BVC CLF

ACCESSIBLE C/RAMP TYP

10' HT BVC CH

CONCRETE-FILLED BALL-JOINT TYP

GEN

VE CONC

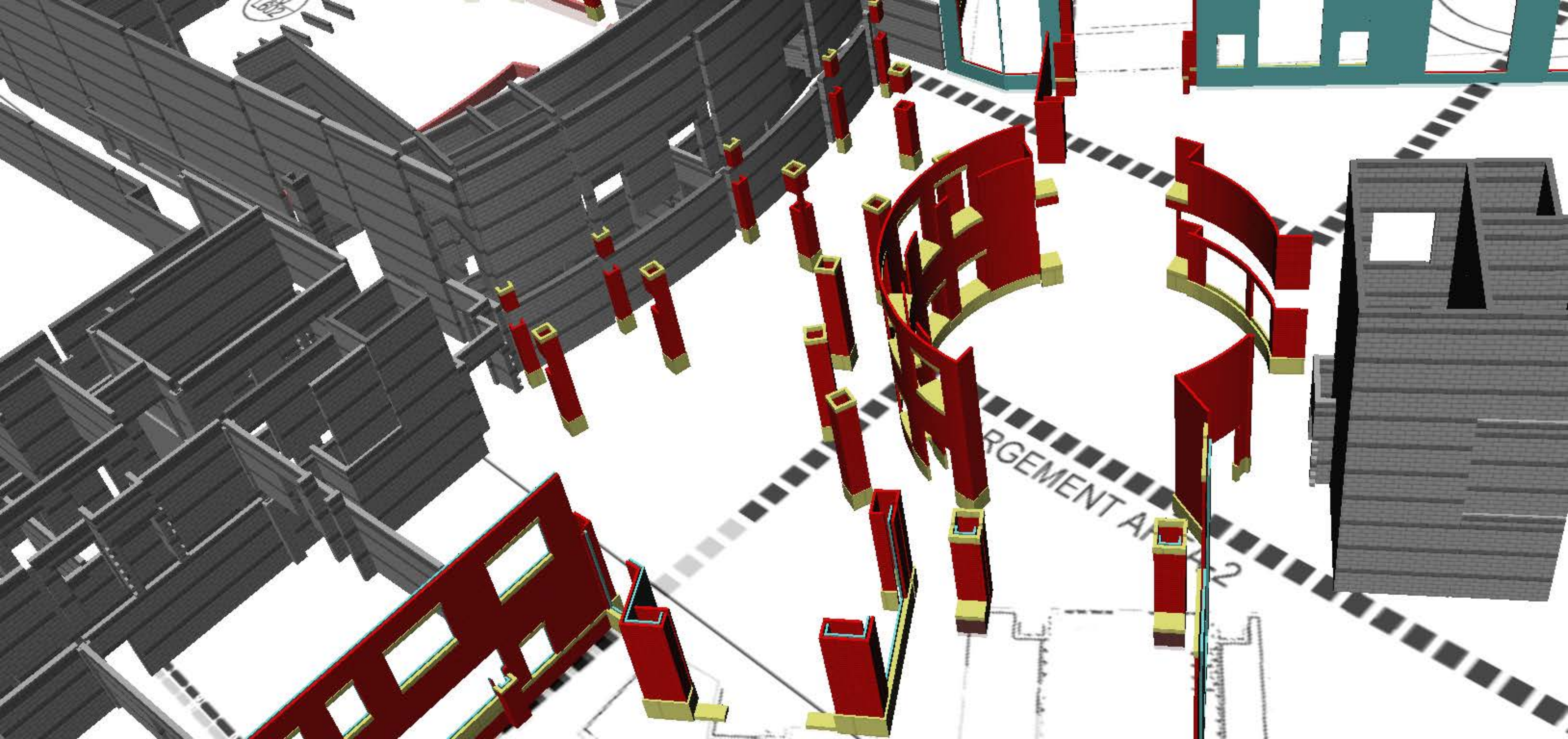
C28

LANDING

LANDING

LANDING

VE CONC



1502

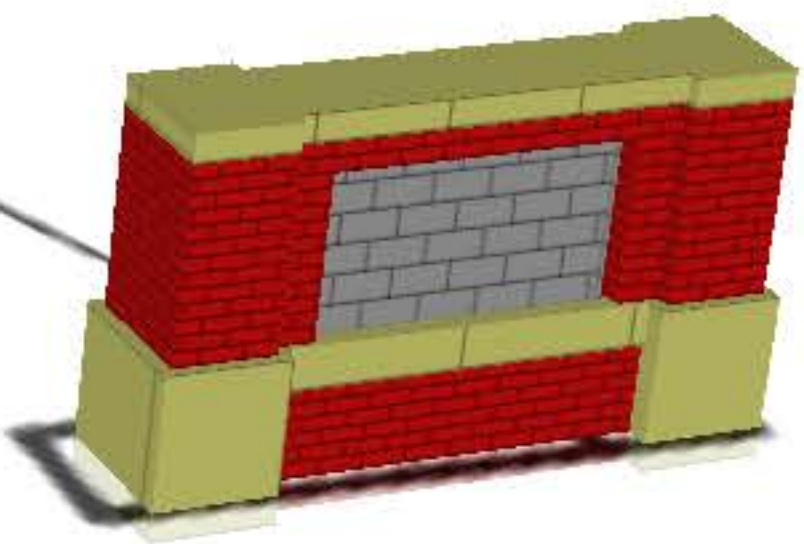
ARGEMENT A

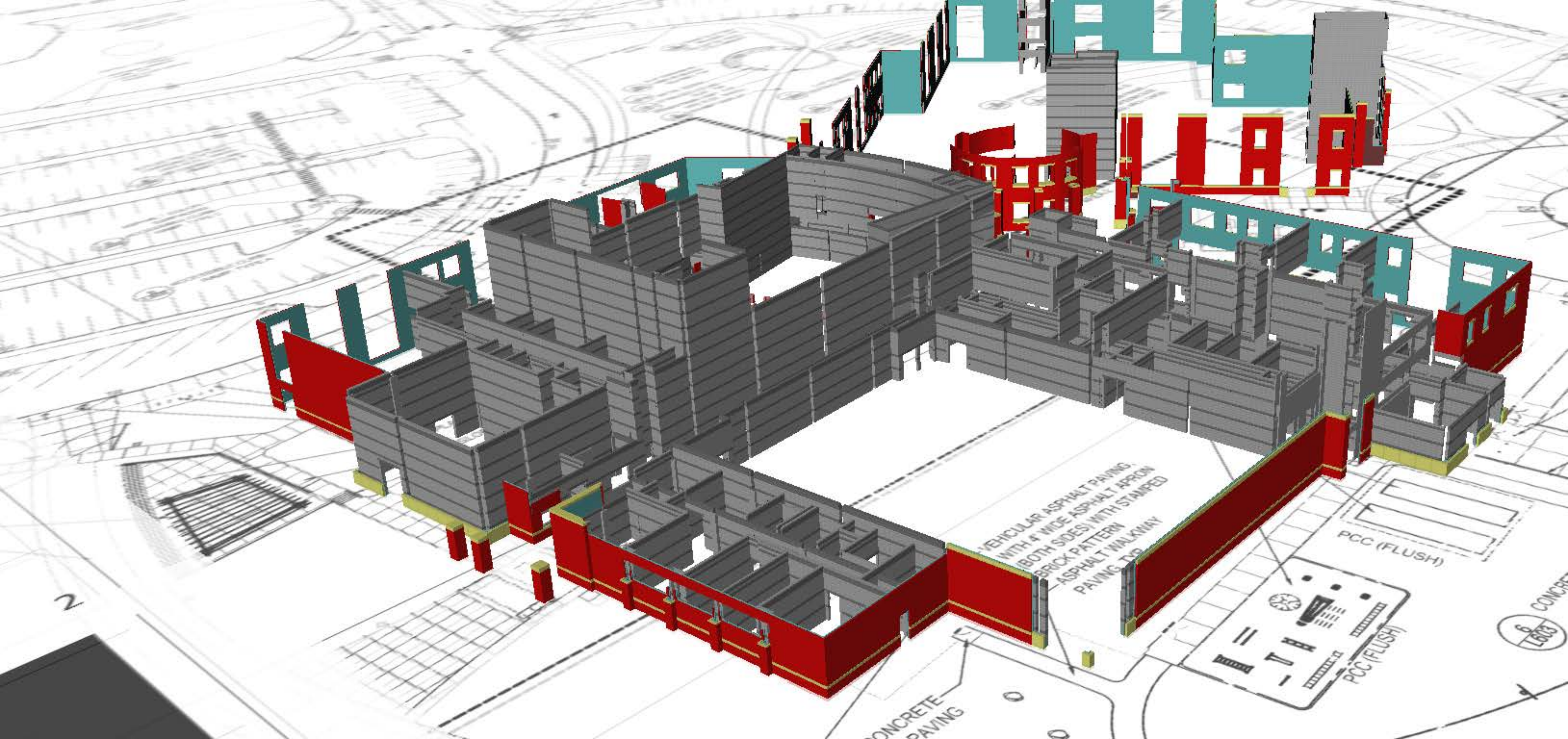
2

Architectural

ST GROVE STREET

MAIN ENTRANCE SIGN,
(SEE ARCH. DWGS)
ROADWAY LIGHT, TYP.
(SEE ELEC. DWGS)





VEHICULAR ASPHALT PAVING
WITH 4' WIDE ASPHALT APRON
BOTH SIDES / BRICK PATTERN
ASPHALT WALKWAY
PAVING TOP

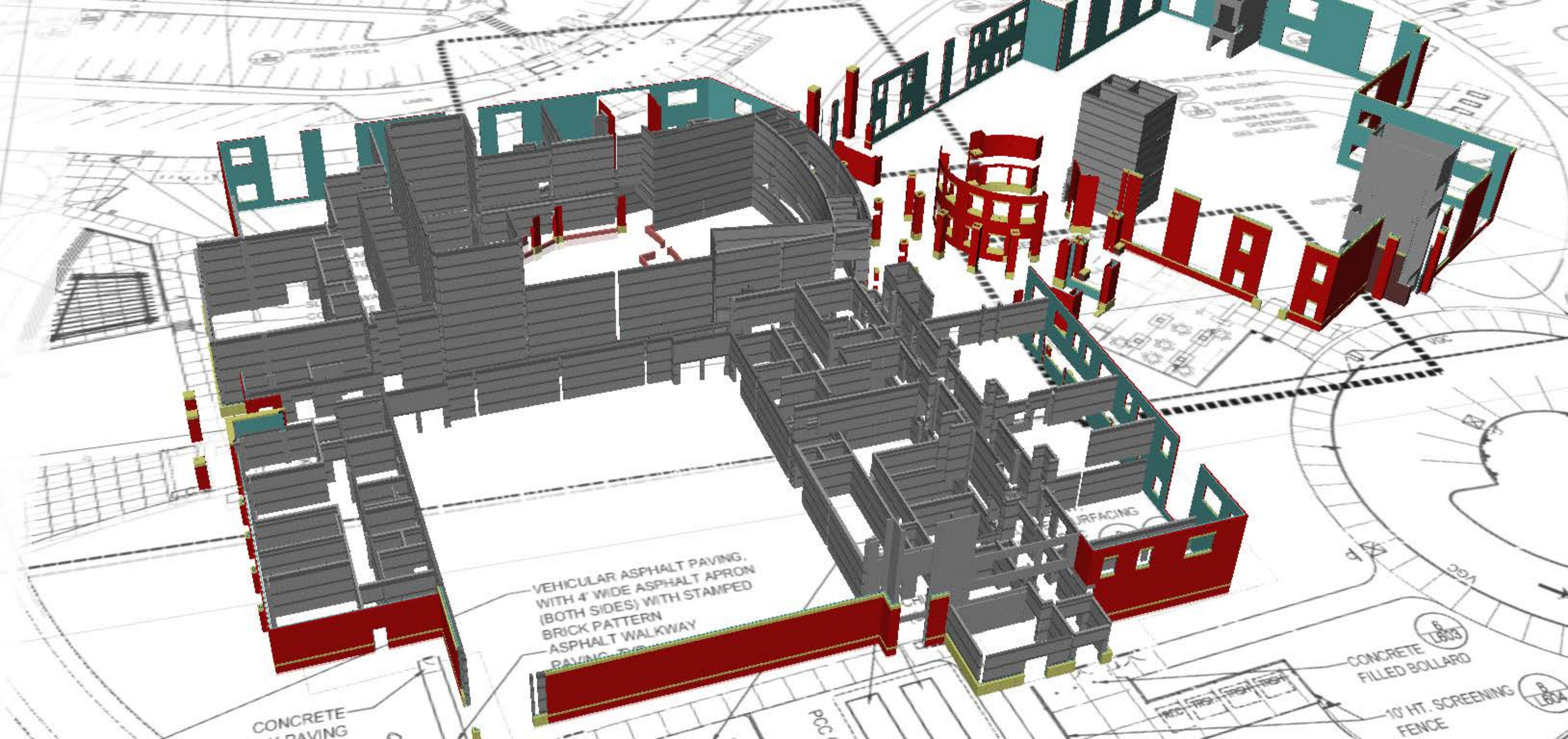
PCC (FLUSH)

PCC (FLUSH)

CONCRETE
6

2

CONCRETE
PAVING

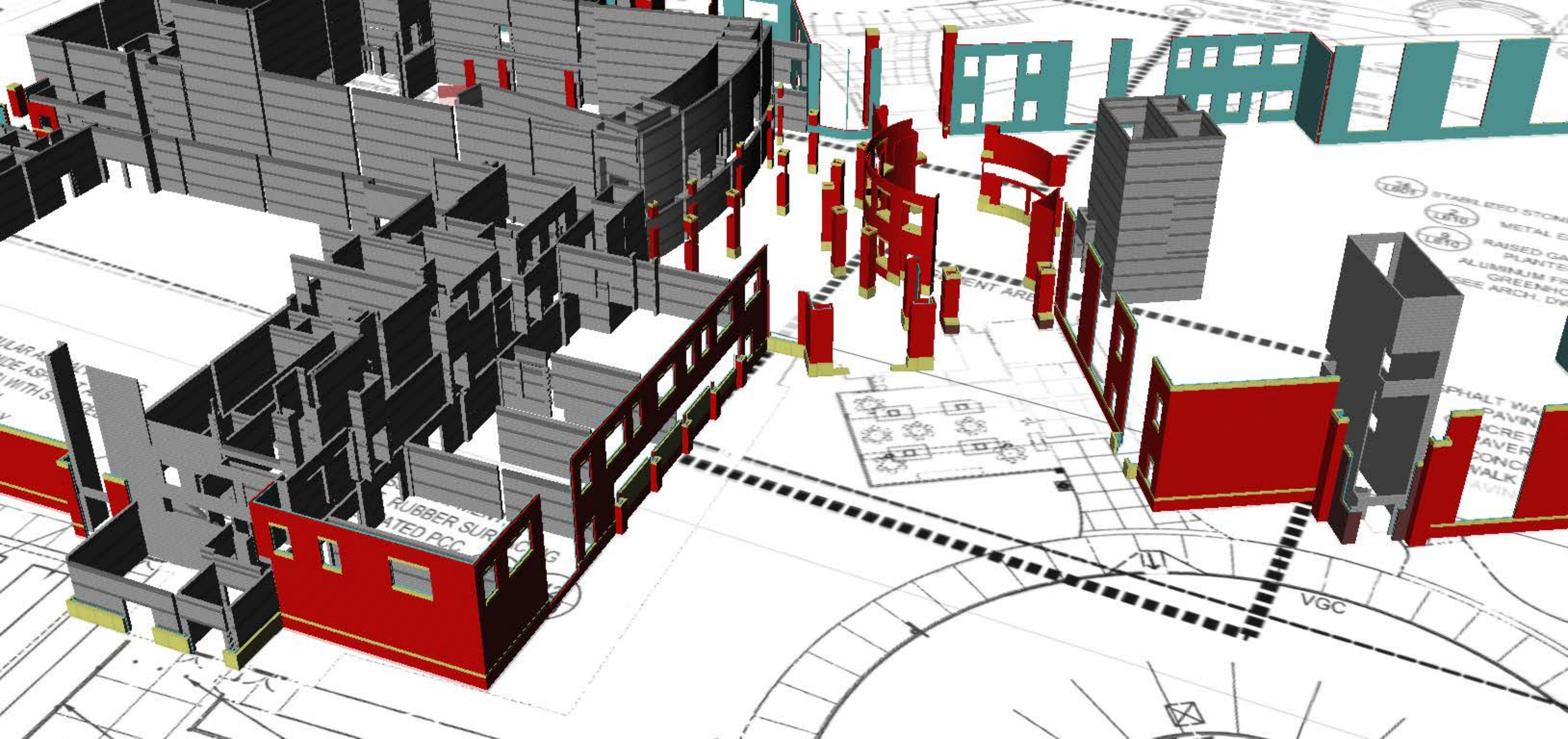


VEHICULAR ASPHALT PAVING,
WITH 4' WIDE ASPHALT APRON
(BOTH SIDES) WITH STAMPED
BRICK PATTERN
ASPHALT WALKWAY
PAVING

CONCRETE
PAVING

CONCRETE
FILLED BOLLARD

10' HT. SCREENING
FENCE





URA

SPRINKLER ASPHALT PAVING
WITH A 10% ASPHALT
WITH 10% ASPHALT
WITH 10% ASPHALT

LE RUDOLPH
PAVING PCC
PAVING PCC
PAVING PCC

1 METAL EDGING
2 STABILIZED STONE DUST
3 METAL EDGING
4 STABILIZED STONE DUST
5 METAL EDGING
6 STABILIZED STONE DUST
7 METAL EDGING
8 STABILIZED STONE DUST
9 METAL EDGING

1 STABILIZED STONE DUST
2 METAL EDGING
3 RAISED GARDEN PLANTER
4 ALUMINUM EDGING
5 ENHANCED CONCRETE
6 SPEED

ASPHALT WALKWAY PAVING
CONCRETE PAVING
PAVERS, TYP.
CONCRETE

CONC. WALKWAY PAVING

VGC

VGC

